

Biomedical Data and Tool Sharing

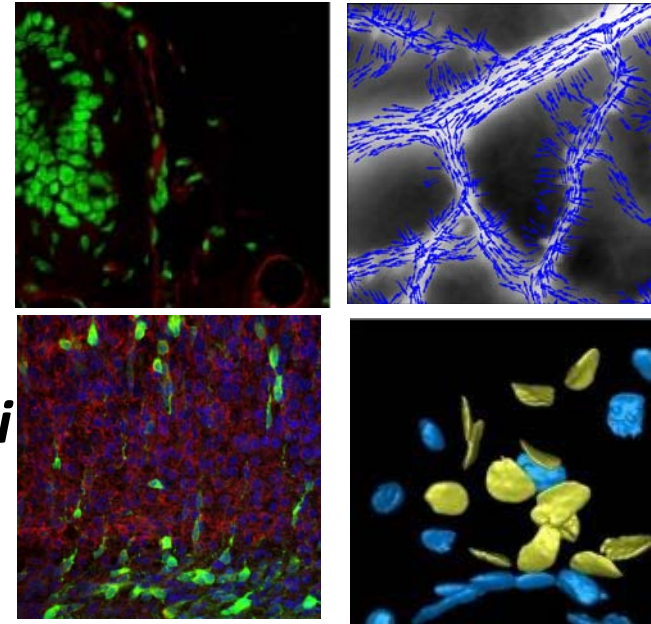
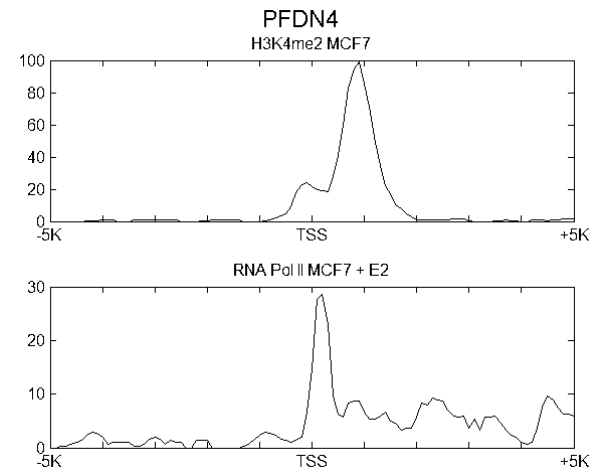
Kun Huang

Department of Biomedical Informatics

OSUCCC Biomedical Informatics Shared Resource

NIDA, 2010

- Next generation sequencing
 - Multiple *protocols*: RNA-seq, genome re-sequencing, MIRA-seq, ChIP-seq, etc.
 - Multiple *diseases*: cancers, **drug addiction (in collaboration with *Dr. Wolfgang Sadee*)**
 - Multiple *proteins of interest*: TFs, hormone receptors (ER α , AR), epigenetic markers (e.g., H3K4me1,2,3)
 - Currently about 250 lanes (more than 7.3 billion reads or 300G bases)
- Microscopic images
 - **Brain development study (with *Dr. Song-Hai Shi at SKCC*)**
 - Tumor microenvironment study



- Data
 - Gene expression microarray data
 - Clinical data
 - Patient survival, treatment, outcome
 - Next generation sequencing data
 - RNA-seq data for different tissues
 - Transcriptome, methylome, genome data for cell lines
 - ChIP-seq data
 - Genotype data
 - For regulatory SNP discovery, correlating with gene expression (microarray or RNA-seq) to discover cis- and trans- eQTLs
 - Microscopic images – for algorithm development
- Resources
 - NCBI – GEO, dbGap
 - TCGA, SEER
 - Google Scholar
 - Professional network

- Auto
- Py
- Proj
- Data
- M
- D
- In
- OME
- man

Flow Cell Data Results

Run Folder Name: 100413_HWUSI-EAS68R_0021_61RYLAAXX

Experiment Type: Single-end

Base Pairs: 36

Notes:
 Done 4/19 8:50pm
 BISR pipeline started on 4/19 9:31am
 GA pipeline done 4/17 5:27pm
 GA pipeline started on 4/16 at P01 11:49am

Results/Files

run	Lane	Filename	Organism	GroupName	name	LabAccession	SampleName	Timestamp
100413_HWUSI-EAS68R_0021_61RYLAAXX	1	100413_s_1_1_qseq.txt.gz	Human	Huang Lab	MIRA in endometrial tumors	N-37, 1st In	YH-168	4/19/2010
100413_HWUSI-EAS68R_0021_61RYLAAXX	1	100413_s_1_eland_extended.txt.gz	Human	Huang Lab	MIRA in endometrial tumors	N-37, 1st In	YH-168	4/19/2010
100413_HWUSI-EAS68R_0021_61RYLAAXX	1	100413_s_1_export.txt.gz	Human	Huang Lab	MIRA in endometrial tumors	N-37, 1st In	YH-168	4/19/2010
100413_HWUSI-EAS68R_0021_61RYLAAXX	1	100413_s_1_sequence.txt.gz	Human	Huang Lab	MIRA in endometrial tumors	N-37, 1st In	YH-168	4/19/2010
100413_HWUSI-EAS68R_0021_61RYLAAXX	1	100413_s_1_sorted.txt.gz	Human	Huang Lab	MIRA in endometrial tumors	N-37, 1st In	YH-168	4/19/2010
100413_HWUSI-EAS68R_0021_61RYLAAXX	1	100413_summary.tar.gz	Human	Huang Lab	MIRA in endometrial tumors	N-37, 1st In	YH-168	4/19/2010
100413_HWUSI-EAS68R_0021_61RYLAAXX	1	100413_Summary.htm	Human	Huang Lab	MIRA in endometrial tumors	N-37, 1st In	YH-168	4/19/2010



Lane Properties

	Lane 1	Lane 2	Lane 3	Lane 4
Lab/Group	Huann Lab(Tim Huann)	-Select a Lab-	-Select a Lab-	-Select a Lab-
Sample	-Select a sample-			
Experiment				
Sample ID	179	180	181	182
Experiment ID	3	3	3	3
Project name	MIRA in endometrial tumors	MIRA in endometrial tumors	MIRA in endometrial tumors	MIRA in endometrial tumors
Sample name	YH-168	YH-169	YH-170	YH-171
Sample Accession	YH-168, 1st ln	YH-169, 1st ln	YH-170, 1st ln	YH-171, 1st ln
Experiment Name	MIRA-seq	MIRA-seq	MIRA-seq	MIRA-seq
CCC-Status	CCC	CCC	CCC	CCC
Lab (ftp only)	Huang Lab(Tim Huang)	Huang Lab(Tim Huang)	Huang Lab(Tim Huang)	Huang Lab(Tim Huang)
Sample (ftp only)				
Organism	Human	Human	Human	Human
mRNA Seq Sample (yes/no)	<input type="checkbox"/> mRNA	<input type="checkbox"/> mRNA	<input type="checkbox"/> mRNA	<input type="checkbox"/> mRNA
Description/Special Requests				
Application	Methylation	Methylation	Methylation	Methylation
Is Lane Control?	Control? <input type="checkbox"/>	Control? <input type="checkbox"/>	Control? <input type="checkbox"/>	Control? <input type="checkbox"/>
Contact Info	Joseph.Liu@osumc.edu,29 2-5202,8th floor BRT	Joseph.Liu@osumc.edu,29 2-5202,8th floor BRT	Joseph.Liu@osumc.edu,29 2-5202,8th floor BRT	Joseph.Liu@osumc.edu,29 2-5202,8th floor BRT

anges

- Large
- Illu
- Net
- File
- Accu
- Chal
- and
- Pub
- rou
- Ma
- Link
- Ger
- from

re

ul for

by

codes