

City of Philadelphia



Behavioral Health
Opportunities for Recovery

City of Philadelphia Behavioral Health Opportunities for Recovery



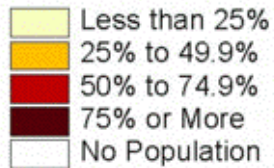
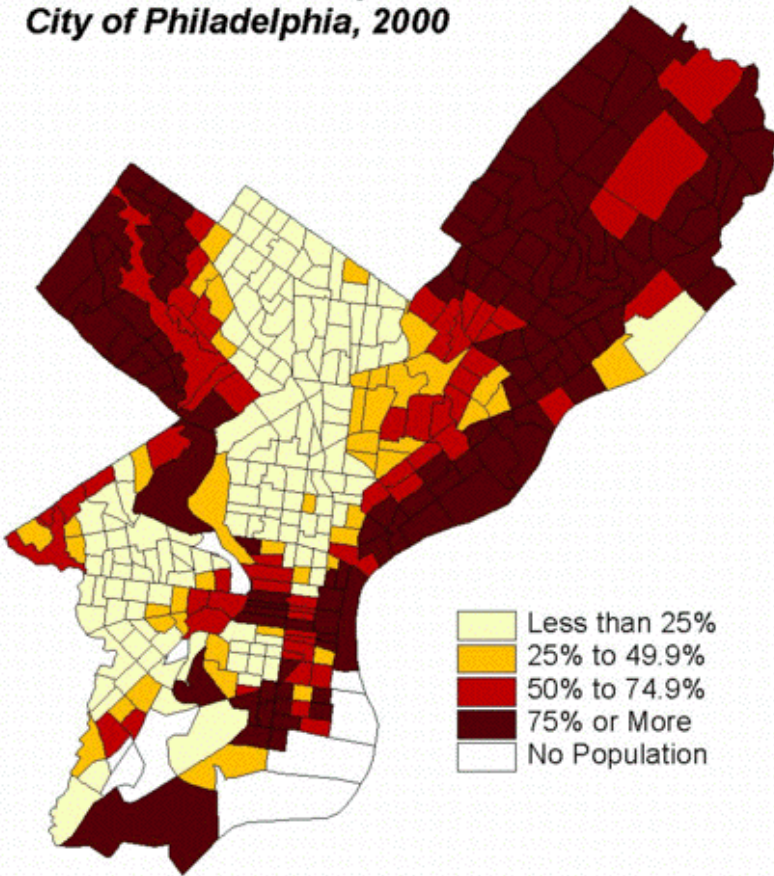
Mission Statement



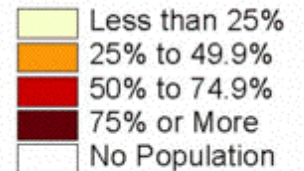
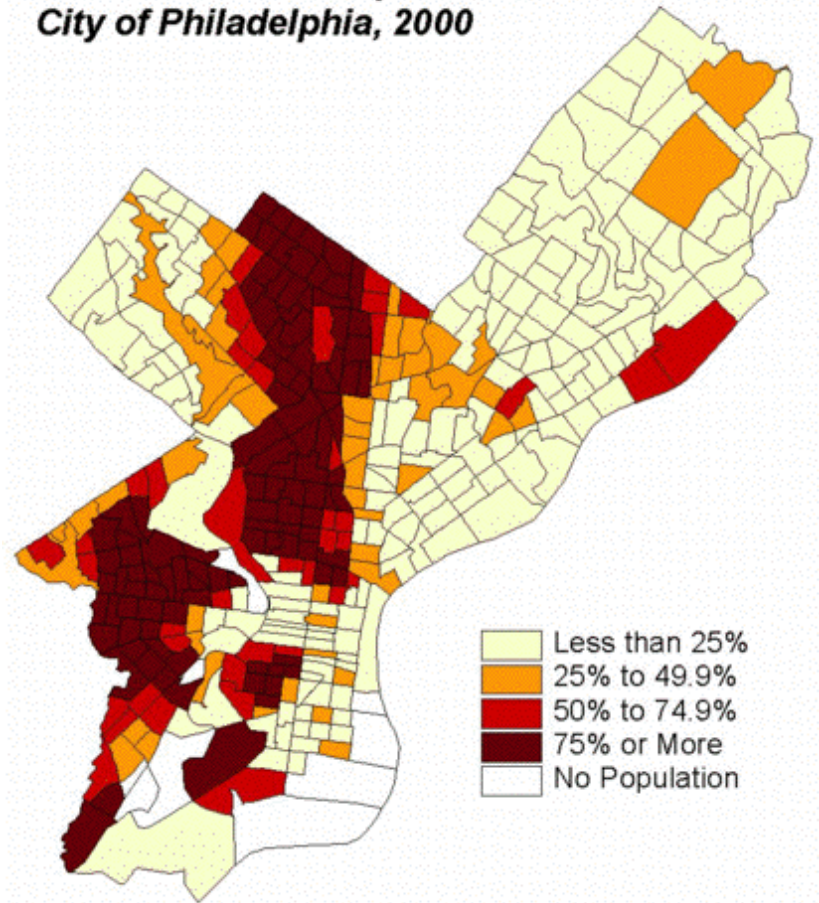
To provide an array of rehabilitative and recovery related services which are accessible, available throughout Philadelphia, and are appropriate to address any behavioral health substance related need.

City of Philadelphia Demographics

*Percent of White Population,
City of Philadelphia, 2000*

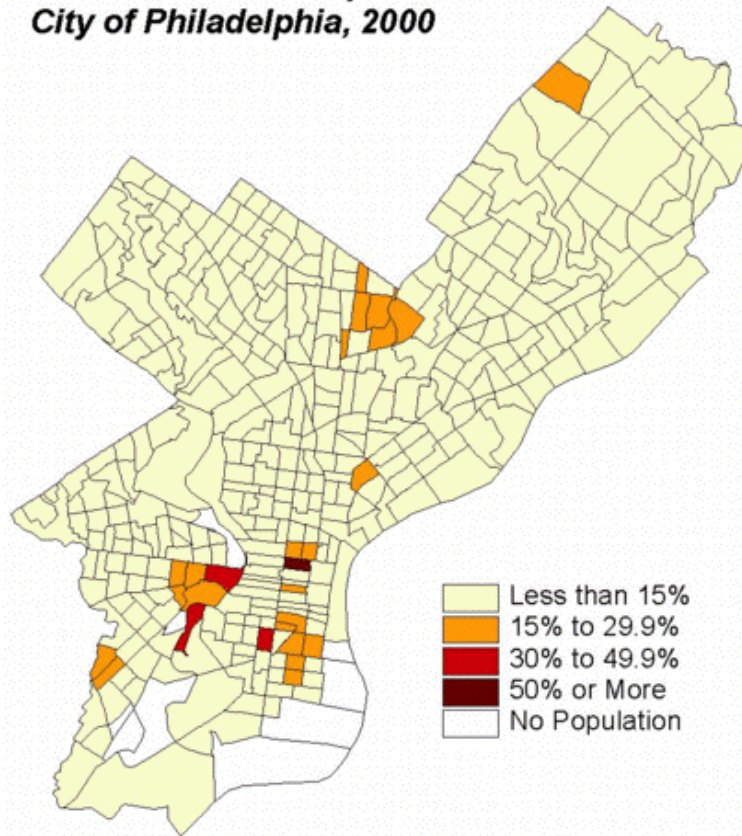


*Percent of Black Population,
City of Philadelphia, 2000*



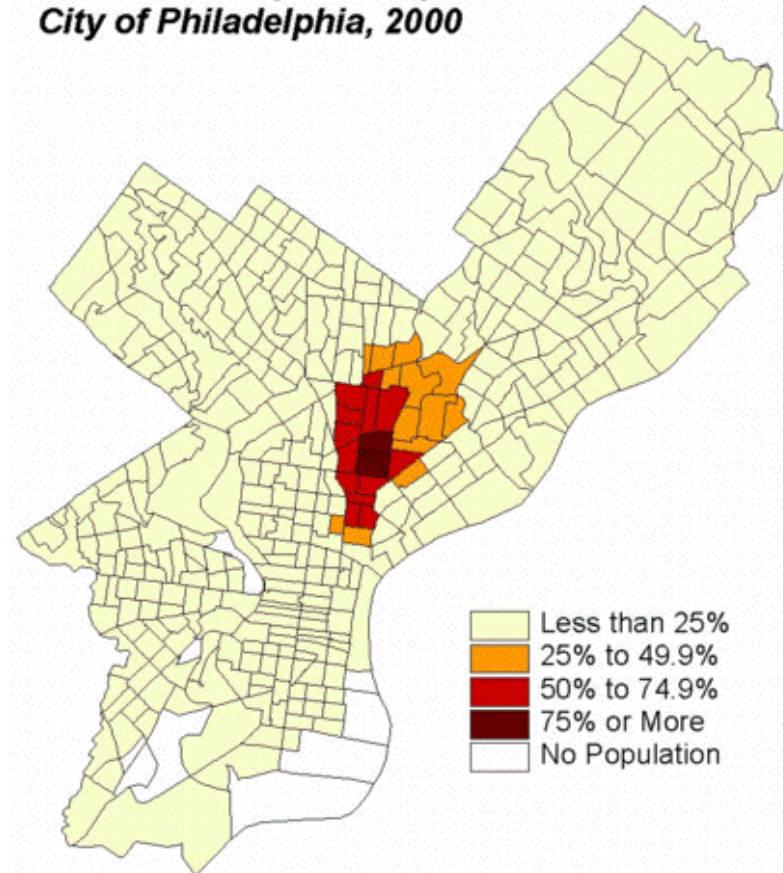
City of Philadelphia Demographics, cont'd.

**Percent of Asian Population,
City of Philadelphia, 2000**



Philadelphia City Planning Commission
www.philaplaning.org

**Percent of Hispanic Population,
City of Philadelphia, 2000**



Philadelphia City Planning Commission
www.philaplaning.org



Philadelphia Behavioral Health System Treatment Capacity (Slots)

■ Detox

– Hospital	21
– Non-Hospital	<u>180</u>
– Total	201

■ Residential

– Hospital	92
– Non-Hospital	<u>1241</u>
– Total	1333

■ Other Chemotherapy

– Hospital	13
------------	----

■ Partial

– Drug-Free	105
-------------	-----

■ Outpatient

– Maintenance	3390
– Drug-Free	<u>8906</u>
– Total	12296

■ Total Tx Slots 13948

Recovery Services

Detoxification:
201 slots

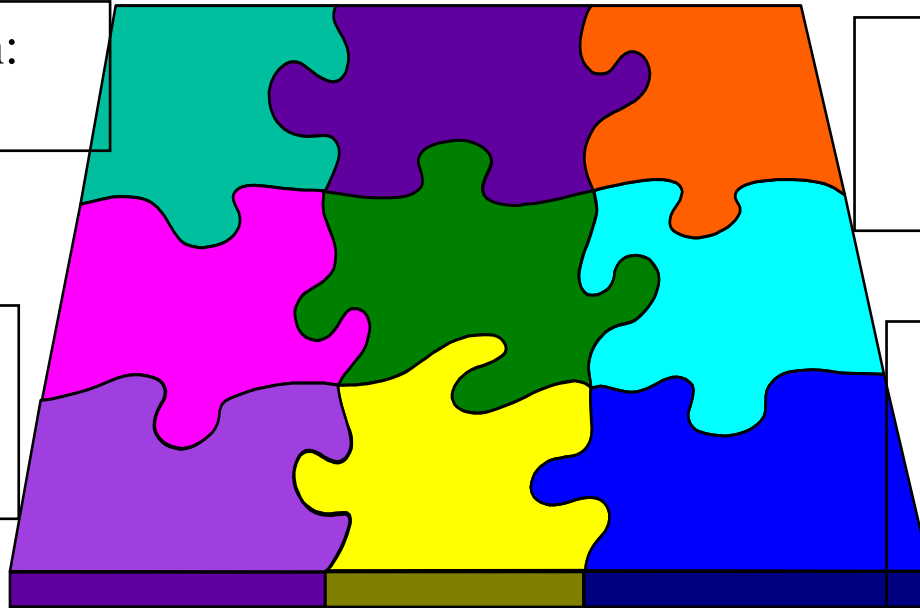
Partial
Hospitalization:
105 slots

Residential
Programs:
1,346 slots

Outpatient
Methadone
Maintenance:
3,390 slots

Recovery House Initiative
Men: 254 slots
Women: 72 slots
Women with Children: 16 slots

Regular and
Intensive Drug
Free: 8,906 slots



Treatment on Demand

What Does That Mean?

In the very broadest sense it means:

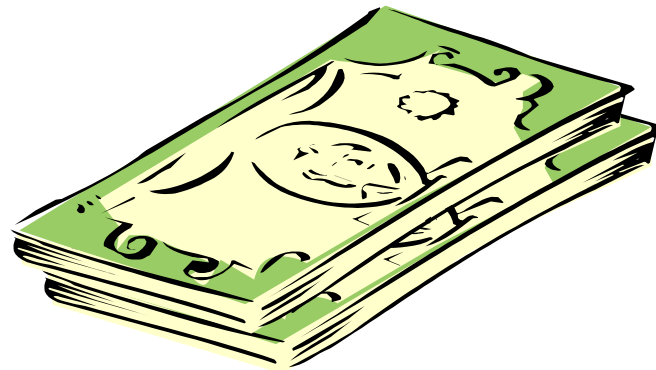
- a) Whatever level of care is desired
- b) Whenever treatment is desired
- c) Wherever treatment is desired.

Most jurisdictions rely on an assessment to identify the most clinically appropriate level of care and then will select from among programs offering that level of care.



Funds to Pursue Treatment on Demand

- a) City General Funds
- b) Block Grant Treatment Funds
- c) State Base Allocation Funds
- d) Behavioral Health Special Initiative
- e) Medicaid Managed Care Funds





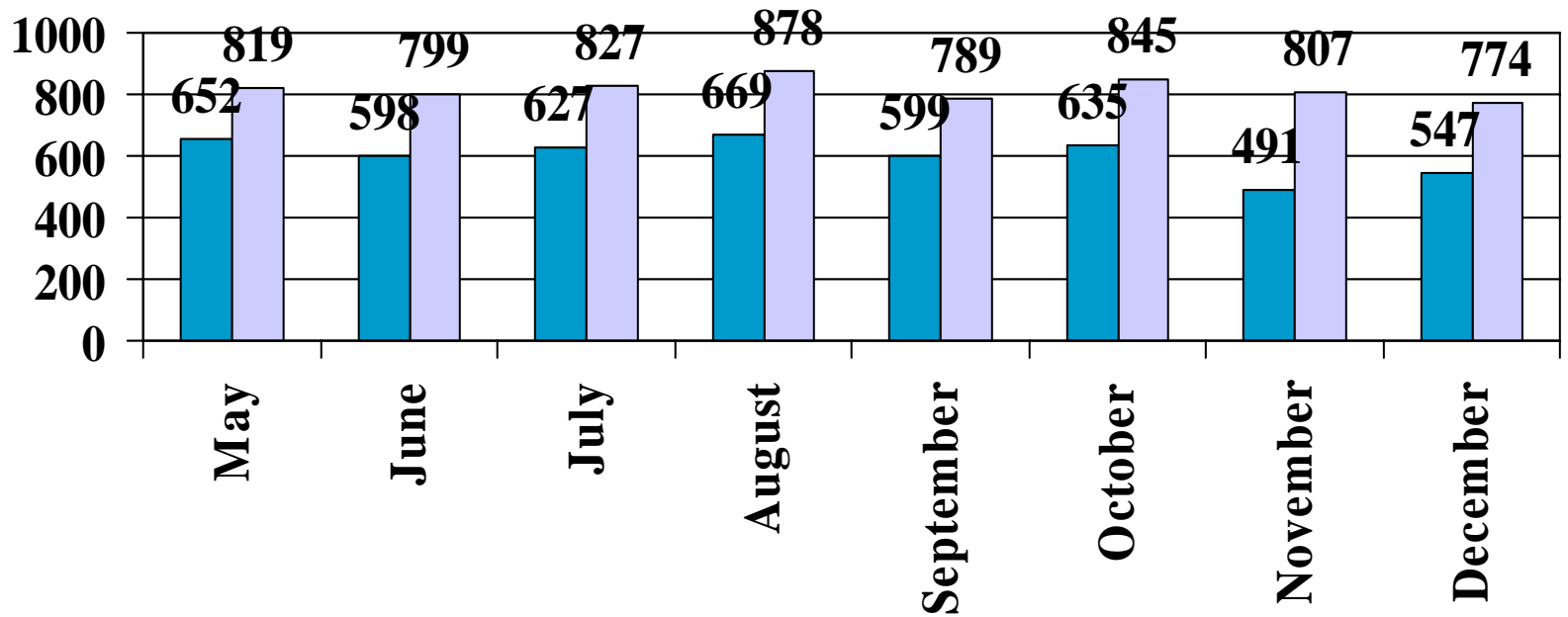
Details, Details, Details!

The devil is in the details:

- a) Be knowledgeable of the epidemiology of substance use/abuse
- b) Racial/ethnic patterns
- c) Gender use patterns
- d) Co-occurring
- e) The criminal justice population, Persons behind the walls



Total Number of Treatment Admissions Operation Safe Streets 2001-2002

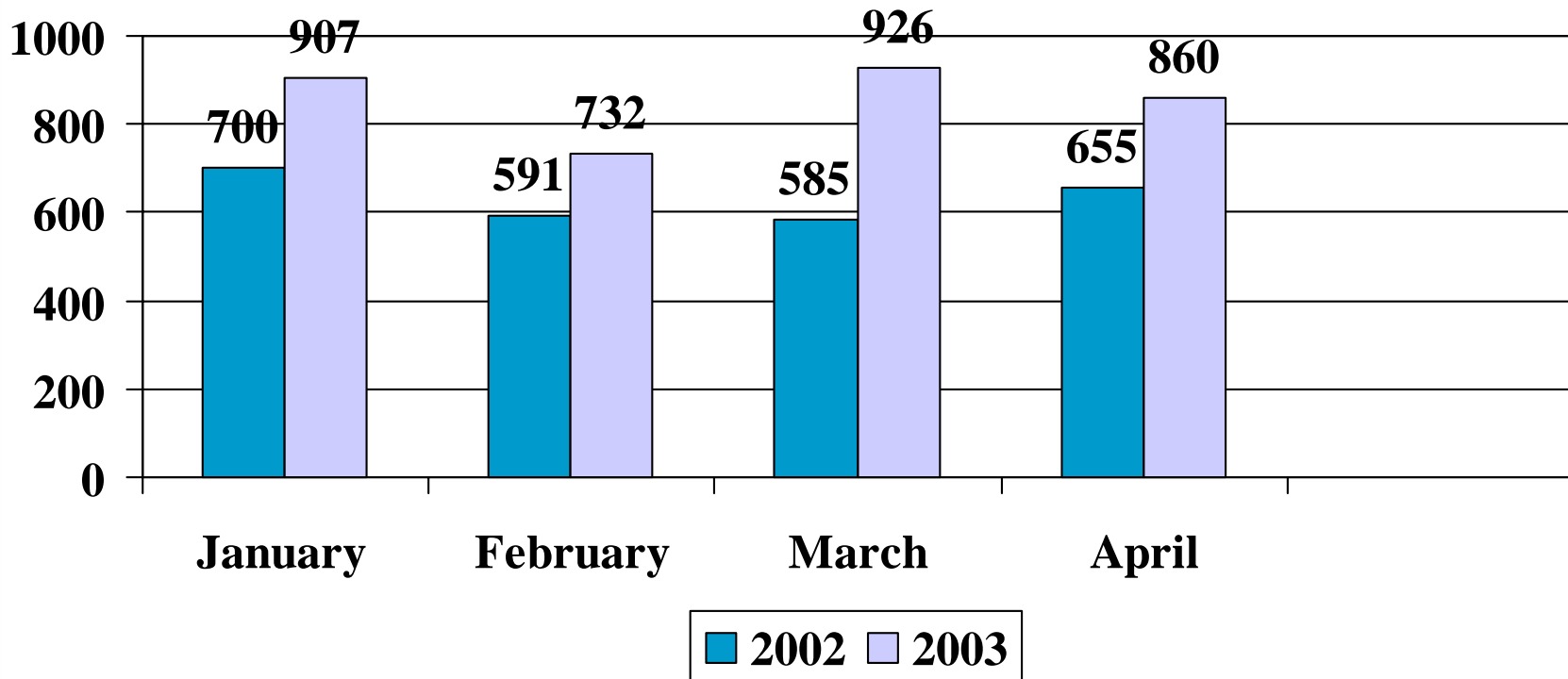


■ Before Operation Safe Streets - 2001 ■ After Operation Safe Streets - 2002

✧ Since Operation Safe Streets, there was an average monthly increase of 217 treatment admissions, which is a 36% increase compared to the prior year.

Total Number of Treatment Admissions Operation Safe Streets

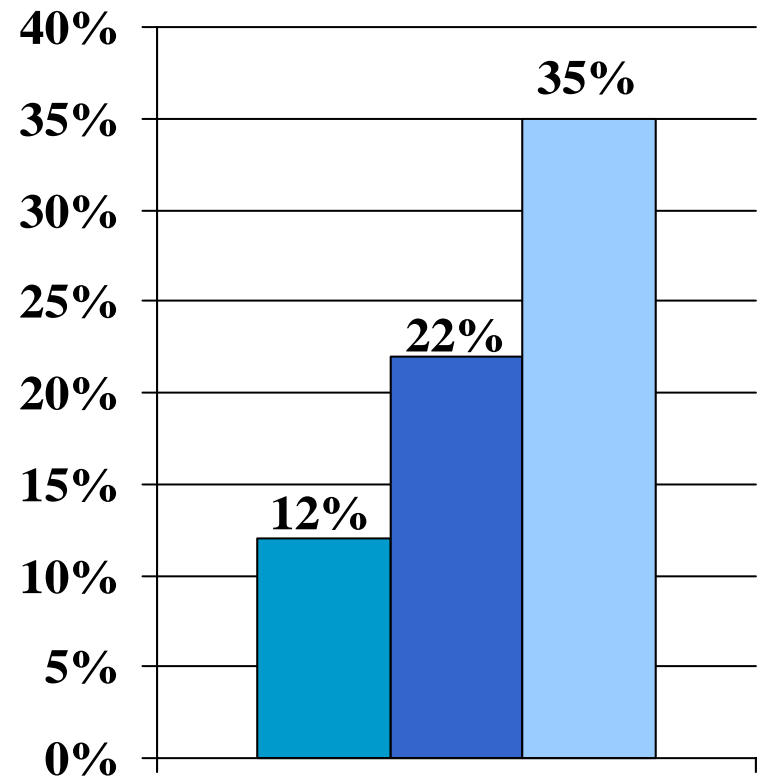
2002-2003



NEW CONVICTIONS YEAR TWO

There was a **66%** decrease in convictions among FIR clients who completed 6 months of treatment and a **38%** decrease among FIR clients who had any treatment compared to the control group.

% New Convictions

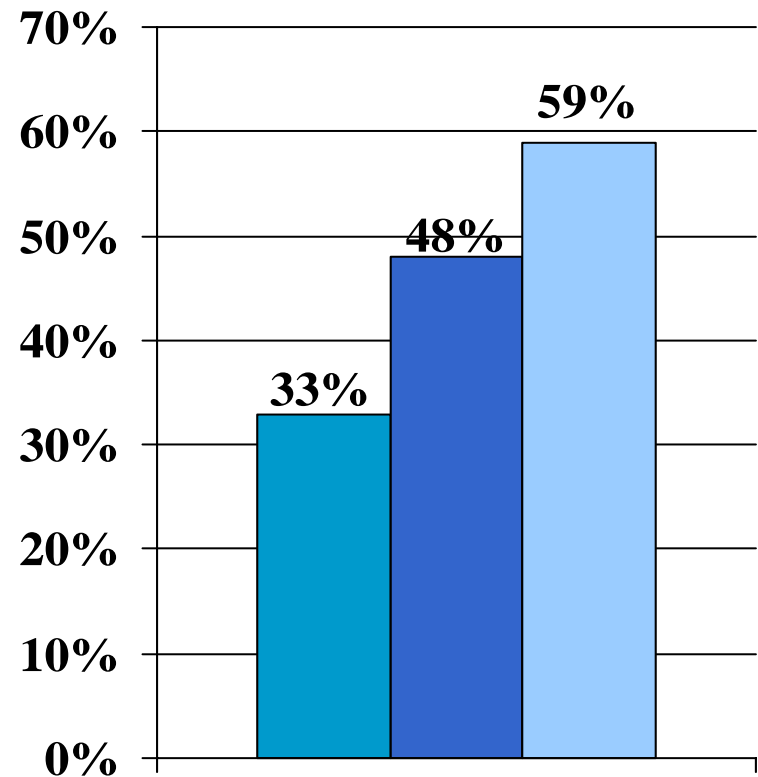


■ 6 M Tx. ■ Any Tx. ■ Control

NEW CONVICTIONS YEAR FOUR

There was a 44% decrease in convictions among FIR clients who completed 6 months of treatment and a 25% decrease among FIR clients who had any treatment compared to the control group.

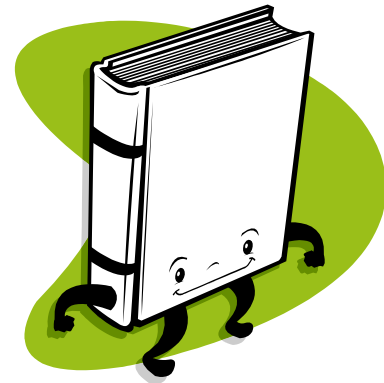
% New Convictions



■ 6 M Tx. ■ Any Tx. ■ Control

In Summary...

1. Knowledge of jurisdiction's demographics
2. Knowledge of epidemiology of substance use/abuse:
 - What drug(s)
 - How used
 - By whom
3. Program staffing
 - Staff qualifications
 - Staff retention
 - Staff training



In Summary... cont'd

4. Support Services

- Vocational
- Housing
- Case Management
 - Centralized/Decentralized
 - Caseloads

5. Funding

- Program
- Fee for service (rates)

6. Working with other systems:

- Criminal justice
- Housing
- Dept. of Human Services
- School District(s)
- Others

